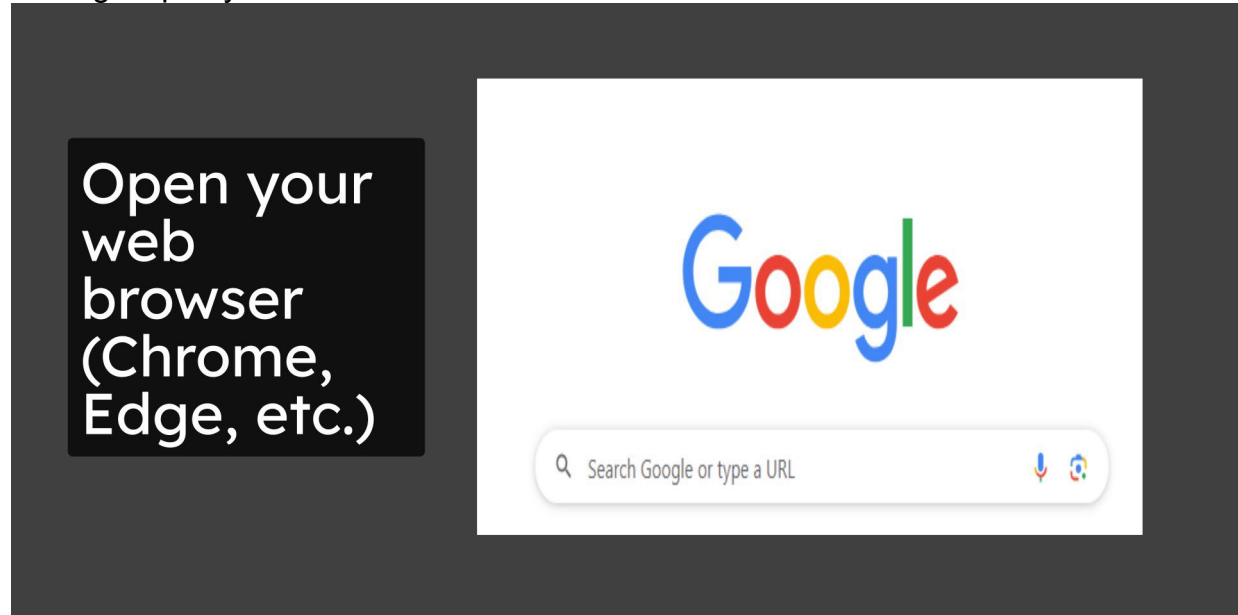


How to Access Kurzweil 3000

You can now use Kurzweil 3000 3-year Lindenwood single sign-on

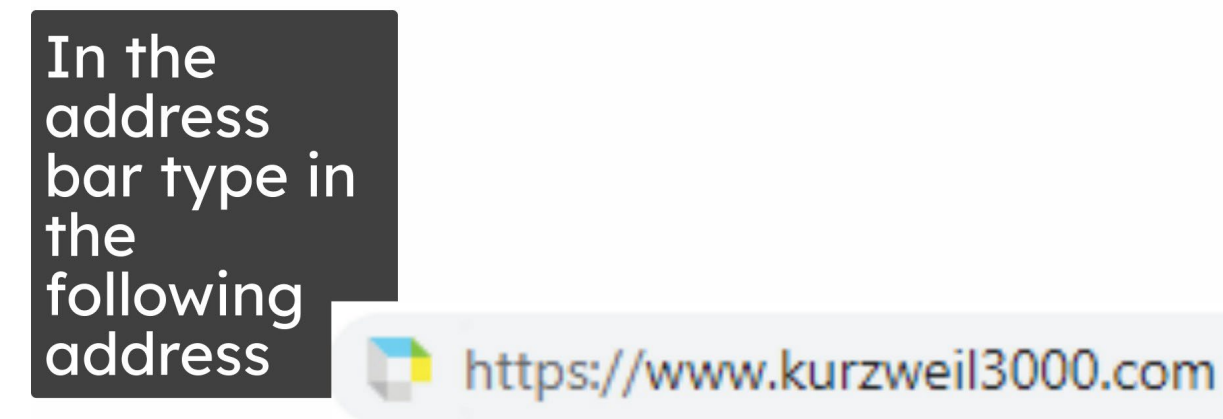
1. Open your web browser (Chrome, Edge, etc.)

To begin open your web browser



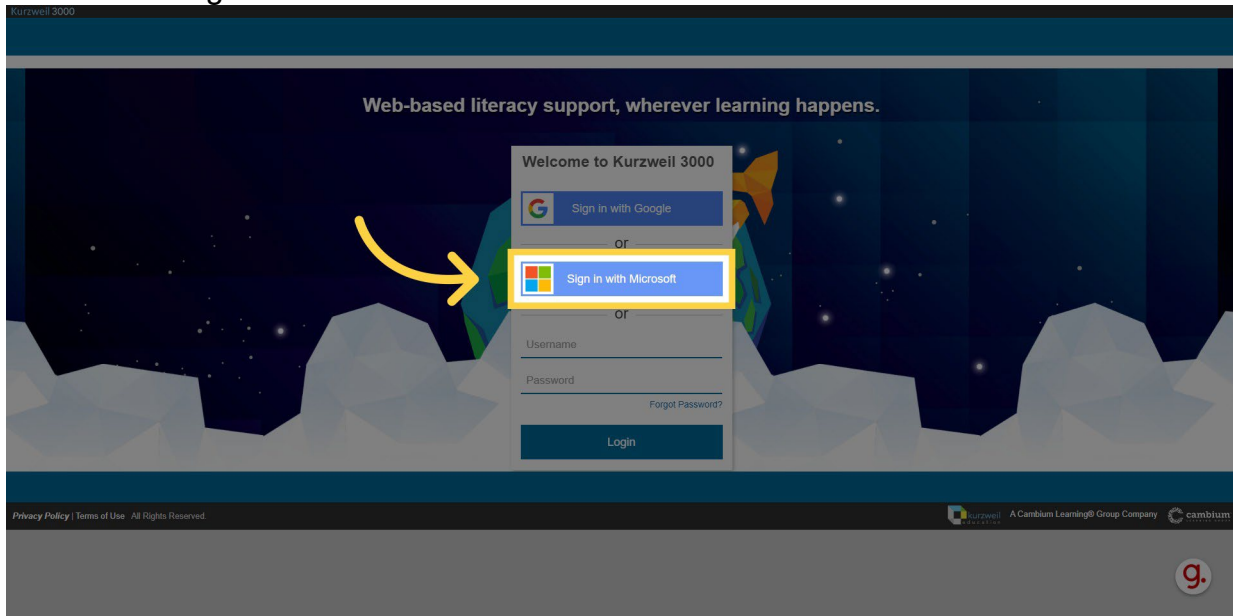
2. In the address bar type in the following address

Next in the address bar go to [www. Kurzweil 3000.Com](http://www.kurzweil3000.com)



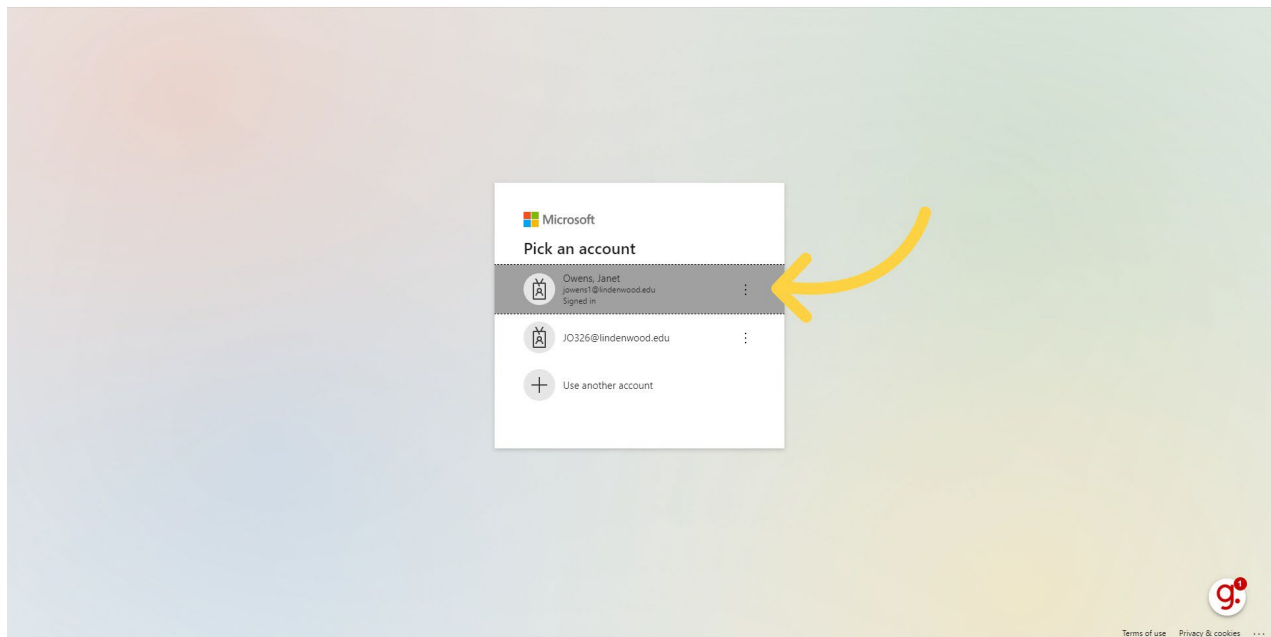
3. Click "Sign in with Microsoft"

Click on the sign-in with Microsoft button



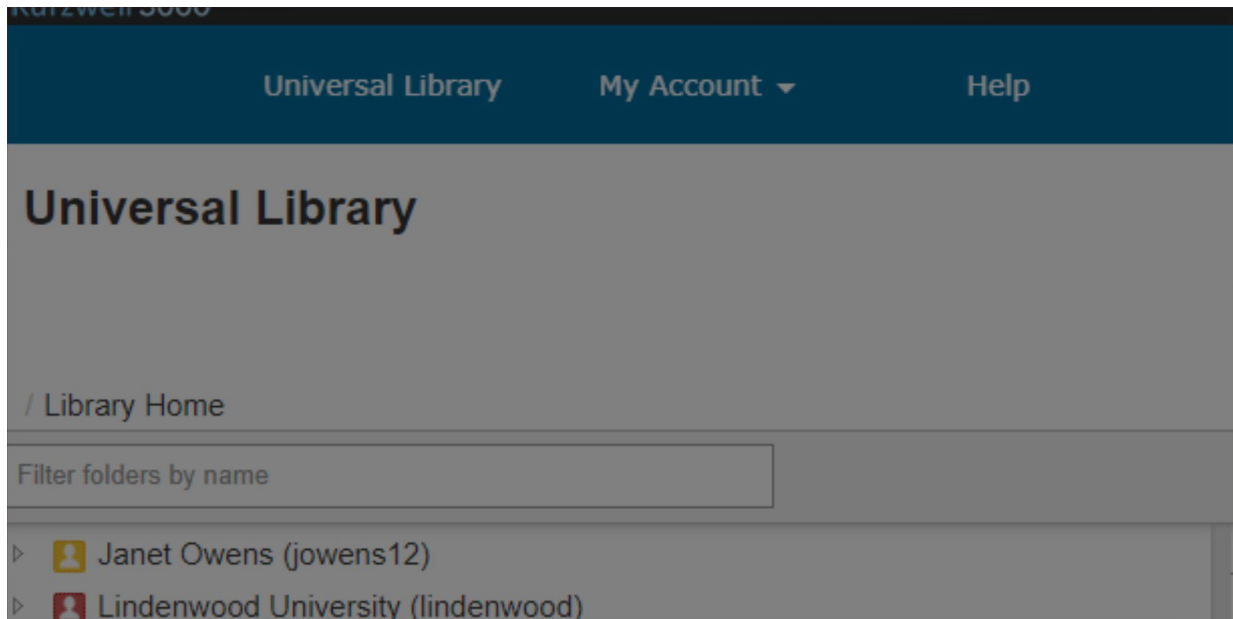
4. Enter your school credentials and complete the Microsoft authentication

Enter your school credentials and complete the Microsoft Authentication



5. You are all set!

If you signed in successfully it will automatically log you into Kurzweil 3000 with an account tied to Lindenwood University you will see the Carswell 3000 landing page similar to the one in this life and that's it you're all set additional guidance on how to use as well 3000 you may visit there informational Winks at Kirk's well Academy



This guide covered the steps to How to access Kurzweil 3000 in Kurzweil3000 and Microsoft 365.