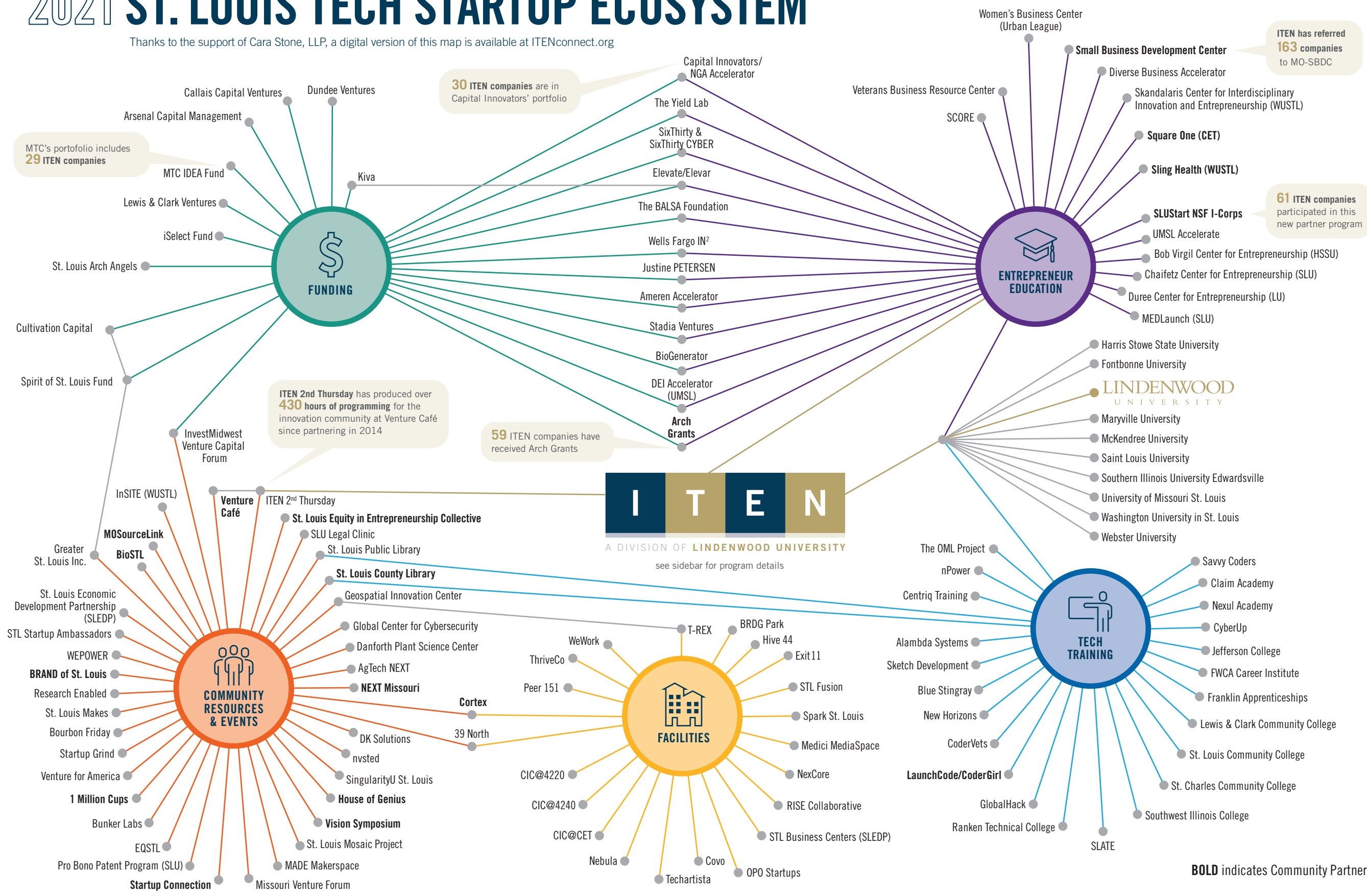


2021 ST. LOUIS TECH STARTUP ECOSYSTEM



Thanks to the support of Cara Stone, LLP, a digital version of this map is available at [ITENconnect.org](https://itenconnect.org)



PROGRAMS & SERVICES

Educational Events
ITEN offers both public and member-only events. Public events include 2nd Thursday @ Venture Café, STL Startup Week, Startup Connection, Vision inclusion symposium, and programs through the St. Louis Equity Entrepreneurship Collective. For our community members we offer Founder2Founder, Investor and Elevator Pitch Practice, and other ad-hoc events.

Mentors & Entrepreneurs in Residence (EIRs)
Startups can connect with our network of 60+ mentors through the UNION platform where activity, feedback and progress are tracked. Representing a variety of skills, expertise, and industries, our mentors are available to companies at every stage. EIRs are aligned with startups as they enter the Investor Readiness Program to help them prepare for fundraising and scaling.

The EUREKA Experience
Our newest program includes two components—Ideation (8 weeks) & Validation (12 weeks)—to take a founder from idea to product/market fit. Combining the LEANSTACK tools & playbooks, with ITEN mentors and LU student support, EUREKA builds entrepreneurial mindsets and teaches scalable processes that lead to traction and growth.

Investor Readiness Program (IRP)
Companies that confirm their product/market fit and are demonstrating traction can be considered for the Investor Readiness Program. Designed to prepare startups to raise outside funding, this program includes Mock Angels pitch sessions and due diligence preparation. Following completion of this program, graduates are introduced to potential investors and are eligible to receive service provider perks.

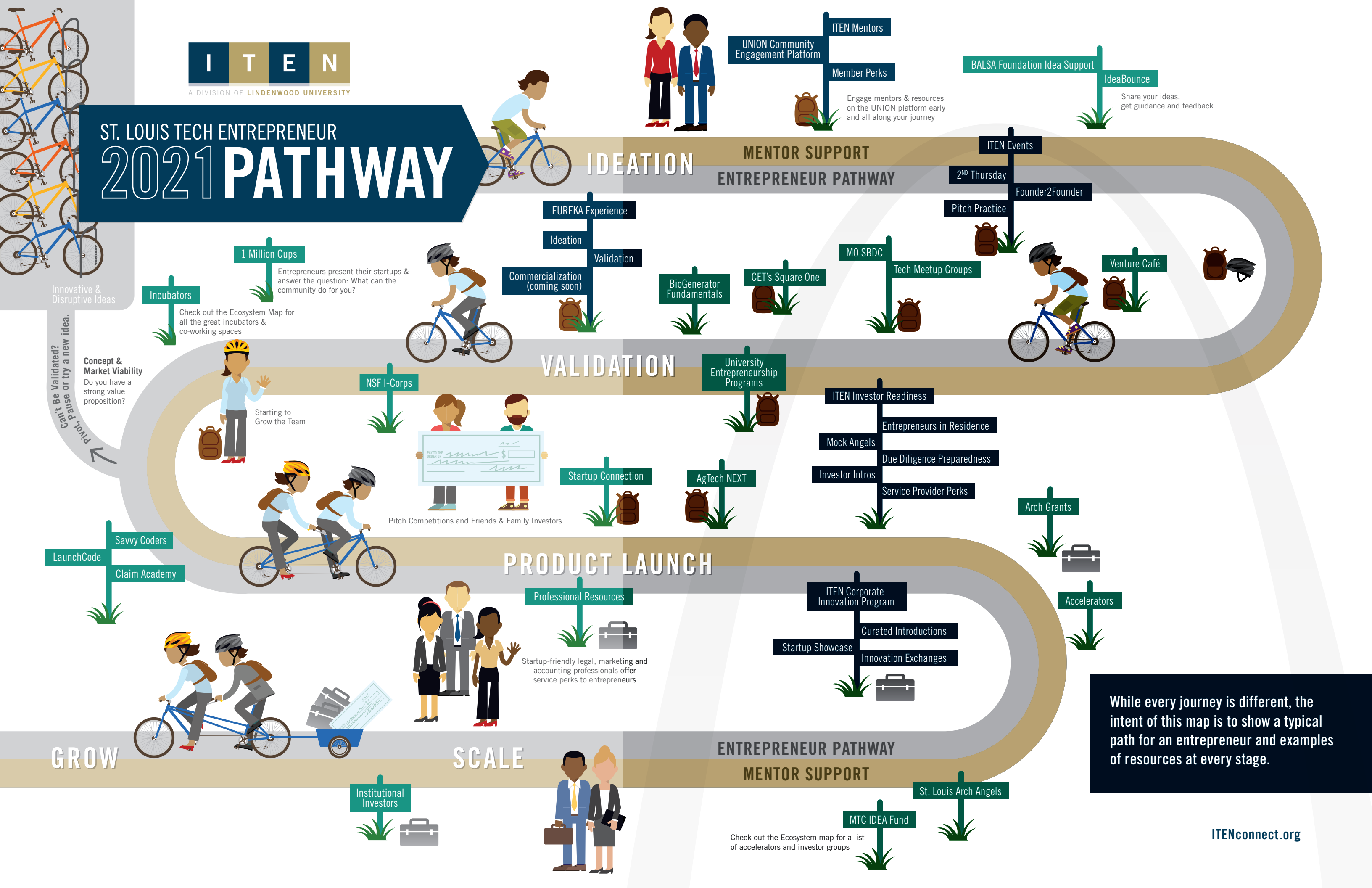
Corporate Innovation Program (CIP)
This program offers our corporate partners access to innovative products and educational sessions, workforce talent, and peer collaboration. There are many ways for our partners and their team members to engage, such as: mentoring, program participation, "first customer" experiences, workshop attendance, and as sponsors.

Member Perks
Free and discounted services, worth over \$60,000 annually, are available to ITEN member companies.

UNION is our community engagement platform that empowers our startup companies, mentors and staff to communicate, learn and collaborate. UNION supports the delivery of ITEN's programs, tracks feedback & evaluations from mentors, shares event information, offers online resources and supports discussion boards for collaborating—all in support of tech entrepreneurs launching new successful companies.

[ITENconnect.org](https://itenconnect.org)

A stylized illustration of a person with brown hair, wearing a light blue t-shirt and green pants, riding a blue bicycle. The person is leaning forward in a riding posture. The background is a solid light blue.



While every journey is different, the intent of this map is to show a typical path for an entrepreneur and examples of resources at every stage.